

GORE & DISTRICTS BRANCH



Information Handbook

2012

National Executive 2010

National President	Alec McIver
Immediate Past-President	Stephen Veail
National Treasurer	John Crone
North Island Vice-Presidents	Steve Corlett
	Sandi Curreen
South Island Vice-Presidents	Chaz Forsyth
	Harvie Morrow
Chief Executive Officer	Dianne Brown

Gore & Districts 2010/11 Committee Members:

Patron:	Ivan Grant	
President	Stan Barker	03 4488797
Senior Vice President	Damon Lowe	03-201 6007
Junior Vice President:	Brendon Humphries	03 2089456
Imm Past President:	Carlos McDonald	03 4488797
Treasurer:	Vicki Lowe	03 2016007
Secretary:	Malcolm White	03 2037360
PRO:	Duncan Falconer	03 2083466
Social Convener:	Alan McGuigan	03 2088498
Deer Park Controller:	Ivan Grant	03 2084851
Junior Hunts Convener	Stan Barker	03 4488797
Luggate Lodge:	George Milne	03 2087312
Glenaray Convener:	Gary Weir	03 2084296
Search and Rescue:	Kevin, Alan, David	
Trophy Convener	Phil Van Zuylen	032083798
Newsletter Writer:	Malcolm White	03 2037360
Rifle Shoot,	Adrian McIntyre	03 2076820
Auditor:	Amy McFadzien	
Speakers:	Gavin Roy	03 2085833

Executive

Damon Lowe	03-201 6007
Kevin Baxter	03 2048703
Adam McIntyre	03 2076820
David Shaw	03 248 534
Gary Cuthbert	03 4157717
Adrian McIntyre	03 2076820
Francis Bastiaansen	03 2081672

About the NZ Deerstalkers' Association

Formed in 1937, (Gore branch about 1960) the New Zealand Deerstalkers' Association is New Zealand's recognised National body representing and speaking for hunters generally.

The Association is divided into 51 local branches, with a total of approximately 7000 members.

The fundamental aim of the association is to ensure that the organisation and management of recreational hunting in New Zealand is carried out by hunters.

The principle activities of the Association are:

- Advocacy on behalf of New Zealand's hunters and shooters.
- The promotion of hunting as a legitimate recreational pursuit.
- The promotion of running target, scoped rifle, & bench rest shooting.
- The promotion of sensible, effective, legislation on firearms ownership.
- The publication a quarterly magazine, "New Zealand Hunting & Wildlife".
- The promotion of effective hunter education through the HUNTS programme.
- The collection of data, and publication of the New Zealand Big Game Trophy Record Book.
- The organisation of National Competitions for:
 - Antler, Horn & Tusk Trophies
 - Photography
 - Range Shooting
 - Literary & Research Contributions
 - "Young Deerstalker of the Year"
 - Branch administration

Most branches:

- Hold regular meetings
- Publish a newsletter
- Operate a rifle range
- Have annual competitions for Photography and Game Trophies.
- Organise hunting trips
- Conduct training in bushcraft and hunting techniques
- Participate in their local Search & Rescue organisation

A Headquarters Branch is also available for any person who is unable to, or does not wish to, belong to a local branch.

The Association holds a Conference annually, in the first week of July, which serves as its Annual General Meeting. At the Conference, a National Executive is elected to administer the affairs of the Association.

The Association has a permanent office in Wellington and employs:

- a Chief Executive Officer who is responsible for the administration of the Association
- a part time national Advocate who deals with matters of advocacy on matters related to hunting and shooting
- a part time Office Assistant who assists the CEO in the day-to-day affairs of the Association including administering the membership database and taking care of centralised membership.

An editor, along with his advertising sales and design team are also employed under contract to take care of all facets of the 'New Zealand Hunting & Wildlife' magazine.

Membership

Membership of the Association is open to all persons of good repute. All members of the Association are affiliated through a branch

Classes of membership generally available are:

- Senior
- Junior (available to persons under 18years of age)
- Family (available to the partner, children, or partner's children, of a member)
- Student
- Superannuant
- Endowment

Life Membership may be granted at either Branch or National level for exceptional service.

- All members are covered by the Association's Public Liability Insurance Policy. Insurance Provided by the policy is for \$5,000,000 in respect of any one accident and \$1,000,000 for the Forest & Rural Fires Act..
- All members are entitled to discounts that may be negotiated from time to time.

Hunting & Wildlife Magazine

The Association publishes its own magazine, "New Zealand Hunting & Wildlife", quarterly. This magazine is supplied free to members, is available by subscription, and from selected bookshops and sports stores.

The previous two pages are sourced from the NZDA Website
www.deerstalkers.org.nz

Welcome to Gore and District Branch of the New Zealand Deerstalkers Association.

About Gore & Districts Branch. The Gore Branch was formed around 1960. At the same time through negotiations with the Pinckney family a hunting area on Glenaray was set up for members to hunt from March to July each year. Over the years this system has worked pretty well and is still in place today.

We are one of the larger Branches in the country with membership in 2009 of just under 200 senior members.

Our Clubrooms are at McNab just over the rail bridge heading to Pukerau on Stan MacGibbon's property. This is where we hold our monthly meetings and social gatherings.

We also manage and maintain a farm cottage at Luggate in Central Otago; it is available for members at a minimal charge. It has all the usual amenities of a home away from home.

A Deer Park is also run at Martin Street Gore (south end of Bannerman Park). It has Red and Fallow deer and Hokonui Merinos over the summer.

Our Members are involved in the local volunteer Search and Rescue Organisation. Members can indicate on their subscription form whether or not they wish to be put on the callout list. A couple of training exercises are run every year by SAR. SAR is made up of local groups such as, 'The southern Trail Blazers Club', 'The Hokonui Tramping Club' and NZDA to name a few.

We have an annual hunting and photo competition which members can enter heads and photos taken during the last 12 months which is independent of the National competition.

Members can enter both.

Monthly meetings are held on the last Tuesday of the month at 7.30pm at the clubrooms, we generally have some form of entertainment in the form of a guest speaker or video/DVD.

The Executive Committee is in charge of the day to day running of the branch and meets at 7pm on the same night as the general meetings.

The Branch subscribes to the rules and ethics of the National Association, they can be found on the web site

www.deerstalkers.org.nz/Site/About_Us/code_of_ethics.aspx

ANNUAL CALENDER

General Meetings are on the last Tuesday of the month from January to November at 7.30pm.

Executive Meetings start 1 hour before a general meeting.

January Subs Due

February Swazi Shoot
Club 4WD trip

March Glenaray Opens for hunting

April The Roar

May Duck shooting
SAR exercise
AGM

June

July National conference
Glenaray Closes

August Inter Branch Clay bird Shoot
Night SAR exercise
Glenaray March Ballot
Annual Antler, Horn & Tusk/Photo Competition

September

October Fishing season

November Glenaray April roar Ballot
Last meeting of the Year
Boat Trip Te Anau/Manapouri

Annual General Meeting: AGM of the club is held in May each year on the last Tuesday of the month. Everyone is welcome to attend and it's your opportunity to change any of the club/Glenaray/ competition rules or get on the committee etc.

*Note: to change a rule, suggested changes need to be in the newsletter one month prior to the AGM this gives member's prior notice and time to think and then discuss at the AGM.

Branch Shoots The Branch's rifle range was closed a number of years ago and the Gore Rifle Club which shared the range moved to another location. Due to the cost of certification and interest levels it was decided not to upgrade.

A relatively new addition is the Swazi Shoot. Sponsored by Swazi Apparel the shoot is for junior members where 1st 2nd & 3rd prizes are donated by Swazi. It is held at Adrian McIntyre's property using the .22 silhouettes and clay birds. Watch for dates in the monthly newsletter.

An Inter Branch Clay bird Shoot is held annually against the Blue Mountain & South Otago NZDA Branches in August.

Annual Antler Horn & Tusk/Photo competition is held in August and is usually on a Friday or Saturday night. All Members and partners are welcome to attend. All heads and photos taken during the previous 12 months are eligible to be entered.

There is various prizes during the evening including first pick of the Glenaray blocks in March, Rolling raffle table, shooters world voucher, etc.

National Conference is held in July. Venue location depends on which Branch is hosting Conference and it alternates between the North & South Islands. The Branch sends one delegate to the North Island and two to the South..

National Conference also holds Photographic, Antler, Horn and Tusk Competitions, Video Making, Literary and Newsletter Writing Competitions. Dates for the entry to these competitions are advertised at meetings and in the newsletters. Entry forms are available from the Secretary.

HUNTS Course At present we don't have a HUNTS coordinator. However if you need help or advice on equipment or techniques, contact one of the Committee members.

Glenaray Station. The Branch has 10 blocks available to members, Due to a fencing program Sullivan's & Hyde Home were phased out by the end of 2007. The Blocks are open from March to July and a ballot system is used for March and April.

All other months are booked on a first come first served basis by contacting the controller.

With your permit you will receive a black & white photocopy block map. Larger colour block maps are available from the website www.goredeerstalkers.org.nz or from the Glenaray Controller at a small cost.

Luggate Lodge The Branch has an old farm cottage that they maintain and control at Luggate in Central Otago. The Lodge sleeps about 10 people and is well maintained. It has heating, running water, fridge etc. If you are interested in staying there contact Margaret or George Milne, 6 Kerwood Place, Gore Ph 208 7312.

How to get there-

Turn towards Wanaka from Cromwell at the Wanaka Queenstown Turn off.

Drive 19 km from the turn off

Turn left at rapid No 1971. A gravel driveway leads to the house about one kilometer.

It is tucked in under the hill.

Facilities at Luggate Lodge:

- . Kitchen/ Dining Room
- . Fridge Freezer
- . Range
- . Pots and Pans
- . Cutlery/ crockery
- . Bathroom
- . Laundry with washing machine
- . Lounge with settee (sleeps 2)
- . Bedroom with Double bed and a single (sleeps 3)
- . Bedroom with 3 single beds (sleeps 3)
- . Sun Porch 1 single bed and settee (sleeps 3)

All you need to take is bedding and food.

Please remove all rubbish when leaving.

Rabbit shooting on the farmer's property is encouraged, but get permission first.

Gore and Districts Branch New Zealand Deerstalkers Association
Rules for the use of Luggate Lodge.

- 1 Luggate lodge may be booked by any paid up full member of NZDA.
- 2 Bookings are accepted for a maximum of 4 day period for sole occupancy.
- 3 No sole occupancy bookings will be accepted for the following periods:
20 December – Sunday following New Years Day
Easter holiday break
Queens Birthday Weekend
Labour Weekend
- 4 Members using Luggate Lodge are responsible for the following:-
Leaving the Lodge in a clean and tidy state.
Removing all rubbish beer bottles and cans.
Reporting all breakages, for which they are responsible for the cost of repairs.
- 5 All breakage's to be reported to the Convener.
- 6 NO Dogs permitted in the Lodge.
- 7 Water and electricity to be turned off on leaving the Lodge.
- 8 Rental \$5.00 per night adults
\$4.00 per adult per night for two or more nights.
School Children free.
- 9 For the use of the neighbor's property for rabbit shooting, contact:-
Jeff Brown, Locharburn Station Ph 03 445 1204.
- 10 All farm buildings are totally out of bounds.
- 11 Key is available from the Convener
- 12 Entry to the Luggate Lodge is at your own risk and NZDA takes no responsibility for accident or misadventure.

**Gore and Districts Branch New Zealand Deerstalkers Association
Rules for Hunting on Glenaray Station**

1. Maximum number of rifles/hunters per block; 4 (financial members NZDA)
2. Field rules and ethics of NZDA apply to Glenaray. No animals to be removed from Glenaray in a saleable condition.
3. Anyone hunting on Glenaray, where it is controlled by Gore NZDA, must be a paid up, financial member of the NZDA.
4. Only full financial GORE & DISTRICTS BRANCH NZDA members are eligible to put in an application for the ROAR Ballot (April) Full Financial = Senior or Junior member, not Family or Affiliate members.
5. Subs must be paid in full, in the Treasurers hands by 28 January, or blocks will be reallocated by Controller
6. Maximum number of days permits issued = 3; Monday-Wednesday and Friday-Sunday. No Hunting Thursday at all. (allows for safe travel from blocks) Hunting on these days only, no access to blocks day prior to hunting.
7. Party leaders must ensure all party members names are notified to controller, firearms License No's, and vehicle Reg No are on permit and Permit is displayed in Vehicle Windscreen, If several vehicles are using the same permit, they too must have portion of permit displaying which vehicle/block they are with. (or ask controller for 2nd duplicate permit)
Vehicles without correct permit may be towed by police for trespassing
8. After March April ballots are drawn, remaining blocks available by contacting Controller by phone, 8am till 9pm. Glenaray hunting closes end of July.
9. All rubbish must be removed from Glenaray, including from huts & camps. No stashes of food or gear to be left, no rubbish holes to be dug unless authorized by Glenaray Failure to observe will result in not being allowed to hunt on Glenaray again.
10. All vehicles used on Glenaray must have an efficient muffler system. Drivers must ensure they have enough safety/recovery equipment (chains, shovel, winch, ropes etc) to extract themselves from most situations. Use caution on all tracks & trails.
11. Dogs are Permitted on Glenaray after permission has been gained from Controller, Dog owner must have current Dosing Certificate with you. Dogs only to be used for finding/tracking animals.
12. Any complaints by Glenaray or hunters against any members behavior, is to be reported, in writing, for investigation by the executive, within 21 Days of the event, or no complaint will be recognized.
13. Enter Glenaray at your own risk
14. With block maps available, no poaching will be tolerated
15. Blocks booked and unable to be hunted, must be cancelled as early as possible All permits must be returned regardless if no hunting was done, within 30 Days or further permits will not be issued.
16. Any damage to huts, fences, tracks, stock etc, to be reported to Glenaray Station management, and controller immediately on leaving the property. You will be expected to pay for any costs incurred.
17. No Motorbike access past Pattersons Spur Hut.
18. Please be respectful and render assistance to workers on Glenaray if needed. Leave gates as found. Remember, hunting on Glenaray is a Privilege not a right.
19. Only 1 stag per hunter per permit. Stag means any form of antler. Shoot hinds for meat.
20. No Horses or Helicopters to be used to aid hunting on Glenaray Station.

THE FIREARMS SAFETY CODE - SEVEN BASIC RULES

1. TREAT EVERY FIREARM AS LOADED

Check every firearm yourself.

Pass or accept only an open and unloaded firearm.

2. ALWAYS POINT FIREARMS IN A SAFE DIRECTION

Loaded or unloaded, always point the muzzle in a safe direction.

Note: A safe direction will depend on where you are!

3. LOAD A FIREARM ONLY WHEN READY TO FIRE

Load only the magazine after you reach your shooting area.

Load the chamber only when ready to shoot.

Completely unload before leaving the shooting area

4. IDENTIFY YOUR TARGET

Movement, colour, sound and shape can all deceive you.

NEVER FIRE UNTIL YOU ARE ABSOLUTELY CERTAIN.

5. CHECK YOUR FIRING ZONE

THINK! What may happen if you miss your target?

What might you hit between you and the target or beyond.

Consider the possibility of ricochets.

6. STORE FIREARMS AND AMMUNITION SAFELY

When not in use. Lock away the bolt, firearm and ammunition separately.

Note: It is an offence to leave a firearm where a young person can get access to it!

7. AVOID ALCOHOL AND DRUGS

Gore and Districts Branch New Zealand Deerstalkers Association.
Antler, Horn and Tusk Competition
Rules

1. All entrants to be financial members of the Gore and District Branch of NZDA at the time of the taking of the trophy for the competition.
2. All heads entered in the competition to be clean and hygienic condition prior to scoring.
3. Trophies to have been taken by the entrant and have been taken under NZDA rules of fair chase, excluding any animals released from a safari park or a deer farm, ear marked, ear-tagged, or ear-tag punch hole.
4. Trophies to be accepted with cut skulls but a reminder that only full skulls will be acceptable for the National Competition.
5. Trophies to be taken since the last competition day.
6. All entries to be scored on the Douglas Score System, 14 days prior to competition by a certified Douglas Scorer, that is with a National Certificate. Branch scorers are:- Stuart Rees, Judy Rees, Steven Hogg, Quentin McLeod, Lance Peat, Jon Wood, Gary Cuthbert, Robert Gloag.
7. Trophies and Douglas Scores to be present on Trophy night to be eligible for entry into the competition.
8. If the trophy is at the NZDA National Competition, this would be certified by the Secretary, and would therefore be the only exception, acceptable for not being on display at the competition.
9. First, second and third placing will be awarded if there is more than one entry. To be awarded regardless of size or quality.
10. Placings to take note of Douglas Score first and only then visual aspects, if there is an equal score.
11. All entries must be in their natural state, e.g. no colouring etc.
12. No mounted trophies will be accepted in the competition.
13. No animals in velvet will be acceptable.

Gore and Districts Branch New Zealand Deerstalkers Association Photographic Competition Rules

1. Entrants must be financial members of the Gore and Districts Branch NZDA.
2. Entrants must be financial members of Gore and District Branch NZDA at the time the photo was taken.
3. Photo must have been taken in the last 12 months (between competitions)
Photos taken in the last 12 months prior to the competition but not developed may be entered in the competition the following year.
4. Photographs must be taken in New Zealand, including territorial islands.
5. Maximum of 3 photographs can be entered in each of the five sections (total 15 photos)
6. Colour and black and white prints and slides can be entered in the same competition.
7. Maximum size 180mm x 130mm (5 inches x 7 inches)
8. The owners name to be printed on the back of each photograph along with the section it is to be entered in.
9. Judges decision is final.
10. Closing date for entries for the competition to be 2 weeks prior to competition night.
11. Photographs entered in the competition can be put into the correct section by the judges if they are labeled incorrectly.
12. First second and third to be awarded, if there is more than one entry.
13. Subject matter of photographs to be relevant to hunting, trophies, animals, hunting scenery, flora, fauna in their natural environment.
14. Judges should take into account stalking ability, uniqueness, imagination, artistic value, correct focus and exposure, composition, in that order.
15. Photos entered (or a copy) become property of Gore and Districts Branch NZDA as a record of members activities.

SECTIONS

GAME ANIMALS (Live)

HUNTER'S TROPHY

SCENIC

HUMAN INTEREST-(Must have human activity in it.)

INSECT AND OTHER WILDLIFE

BEST OVERALL PHOTOGRAPH (The winning photograph in all sections to go automatically into this section.)

Best Video Footage

Other places to hunt

Fiordland

Permits issued from DoC Invercargill, Tuatapere or Te Anau.
Hunt Red Deer, Wapiti, Chamois and pigs.
No blocks except for the Wapiti area bugle

Western Southland

Includes Snowdon, Woodlaw, Dean, Rowallan, and Waitutu, Forests, Eyre and Takitimu Mountains and the Longwoods Range
Permits issued for up to one month duration in an open forest basis.
Permits issued from DoC Invercargill, Tuatapere or Te Anau.

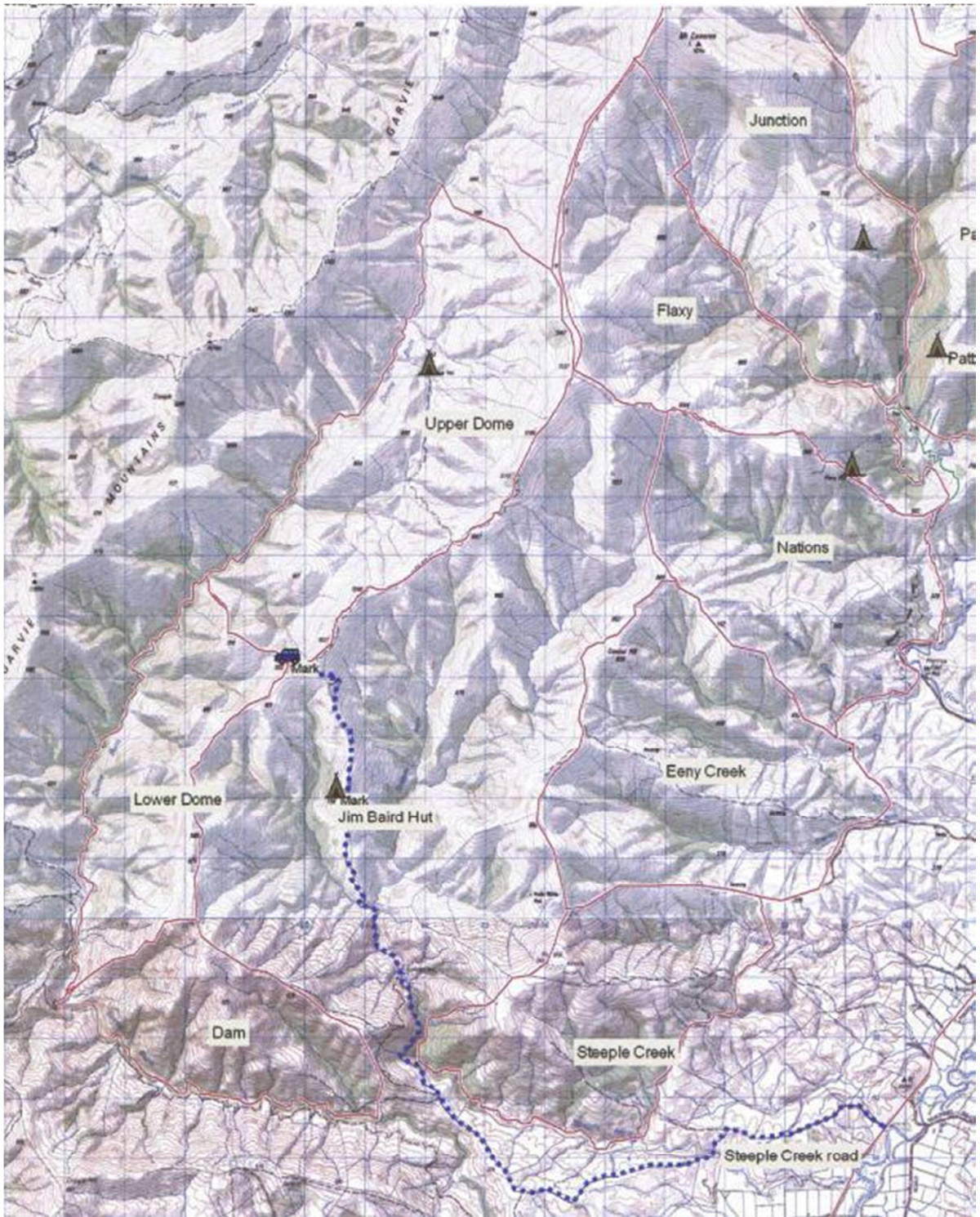
Eastern Southland & West Otago

Includes Waikaia Forest Leithen Bush, Blue Mountains RHA, Waikaia and Leithen have a roar ballot. Blue Mountains operates a block system
Hokonui Hills and Western Catlins
Permits issued up to four months in duration in an open forest basis
Permits issued from DoC Invercargill.

Stewart Island

Combined open zone and block system in operation.
Permits must be applied for in advance from DoC Stewart Island or Rakiura Maori land Trust.
Blocks with hunter camps cost \$15/ person/trip.
Permit duration up to 10 days with max 12 people & 10 rifles.





**GORE AND DISTRICT BRANCH N.Z.D.A.
GLENARAY STATION HUNTING PERMIT APPLICATION**

Blocks Available: *Dam, Lower Dome, Upper Dome, Steeple Creek, Eeny Creek, Nations, Flaxy, Junction,
Patterson's Spur, Whitecomb*

Permits to be returned to Controller: Gary Weir, 20 Milton St Gore Ph 2084296.

Name of Party Leader:

Full Name:

Address:

.....

Firearms License No.....

Phone Number HomeMobile Ph.....

Vehicle Registration Number: (Of vehicle taken hunting)

Other Party Members Names: (Maximum three)

1.....Firearms License No.....

2..... Firearms License No.....

3.....Firearms License No.....

Are you taking a dog?Yes/No If yes you must contact the controller and
Dosing Certificate to be produced on Demand

Dates Block is required in Order of Choice:

1..... 2.....

3..... 4.....

Blocks in Order of Choice:

1.....2.....

3..... 4.....

Signed:

GORE & DISTRICTS BRANCH NZ DEERSTALKERS ASSOCIATION
Subscriptions for year ended 28 January 2009- 2010

Please Circle One

Senior & Family Membership\$ 85.00	Senior/Family
Every family member \$2.00	
Junior (under 21 yrs) or Superannuate\$ 35.00	Junior/Superannuate
Associate \$ 30.00	Associate
Affiliate\$ 25.00	Affiliate

Final date for payment 28 January 2010

To keep branch records updated **all members** are asked to please complete the details below & return to,

Gore & Districts Branch NZ Deerstalkers Ass. PO Box 199, Gore.

Surname:.....Christian Name:.....

Nominated By: 1..... 2.....

Family Membership:

Partners Name:.....

Childs Name & Date of Birth: 1
(under 18 Years) 2
3

Address: Phone.....
Home..... Work.....
Mobile..... Fax.....

E Mail Address:

Would you like Newsletter to be E-Mailed Yes/No
Available for Search & Rescue Callouts Yes/No
Under the terms of the Privacy Act 1993, I acknowledge that you are retaining my name
For the purpose of mailing further information on NZDA & related matters.

Signed.....